

• FIBERGLASS 427 S/C BODY, DOORS, HOOD AND DECK LID (W/STEEL TUBE FRAME REINFORCEMENT)	\$3,500.00
• FIBERGLASS INTERIOR WITH INTEGRATED FOOTBOXES, REAR TRUNK AND FRONT INNER FENDERS	\$970.00
• HINGES: DOOR, HOOD AND DECK LID AND PROP RODS: HOOD AND DECK LID	\$290.00
• FIBERGLASS SUSPENSION COVERS	\$40.00
• INTERIOR UPPER COWL SUPPORT FRAME	\$775.00
• 4" DIAMETER .125" WALL D.O.M. ROUND TUBE CHASSIS	\$3,360.00
• 4 WHEEL INDEPENDENT SUSPENSION UPPER CONTROL ARMS (SET OF 4)	\$940.00
• 4 WHEEL INDEPENDENT SUSPENSION LOWER FRONT CONTROL ARMS (SET OF 2)	\$560.00
• 4 WHEEL INDEPENDENT SUSPENSION LOWER REAR CONTROL ARMS (SET OF 2)	\$650.00
• 4 WHEEL INDEPENDENT SUSPENSION REAR CONTROL ARM LINKS (SET OF 2)	\$90.00
• REAR SUSPENSION UPRIGHTS WITH BEARINGS (SET OF 2)	\$600.00
• REAR UPRIGHT BRAKE CALIPER BRACKETS (SET OF 2)	\$150.00
• FRONT SUSPENSION SPINDLES WITH BEARINGS (SET OF 2)	\$350.00
• FRONT SPINDLE BRAKE CALIPER AND STEERING ARM BRACKETS (SET OF 2)	\$175.00
• DRIVE HUBS: 6 PIN KNOCK OFF TYPE WITH BRAKE ROTOR ADAPTERS (SET OF 4)	\$1,450.00

### HI-TECH BODY AND CHASSIS ASSEMBLY: ..... \$13,900.00

• THROTTLE PEDAL ASSEMBLY	\$180.00
• ENGINE THROTTLE LINKAGE ASSEMBLY	\$150.00
• FRONT AND REAR COIL OVER GAS SHOCKS (SET OF 4)	\$650.00
• STAINLESS STEEL BRAKE AND FUEL LINES (HARD LINES AND FITTINGS)	\$250.00
• VENTED 12.18" DIAMETER WILWOOD ROTORS (SET OF 4)	\$200.00
• 4 WHEEL WILWOOD DISC BRAKE CALIPERS WITH PADS, FLEX LINES & FITTINGS	\$675.00
• AIR-HEART MECHANICAL PARKING BRAKE WITH CABLES (SET OF 2)	\$195.00
• CHROME PLATED PARKING BRAKE HANDLE ASSEMBLY	\$375.00
• CLUTCH AND BRAKE PEDAL ASSEMBLY WITH PEDAL PADS	\$375.00
• INDEPENDENT CLUTCH, FRONT BRAKE AND REAR BRAKE MASTER CYLINDERS	\$275.00
• 9" FORD THIRD MEMBER I.R.S. CENTER SECTION (3.50 RATIO, ORIGINAL MOUNTING)	\$1,750.00
• REAR HALF SHAFT ASSEMBLIES (LEFT AND RIGHT)	\$530.00
• STEERING COLUMN AND LINKAGE	\$530.00
• STEERING COLUMN HUB	\$95.00
• RACK AND PINION STEERING UNIT	\$375.00
• REPRODUCTION 15" STEERING WHEEL	\$195.00
• ROLL BAR WITH REAR STAY	\$225.00

### HI-TECH CHASSIS AND SUSPENSION COMPONENTS: ..... \$7,025.00

• POWDER COAT CHASSIS	\$570.00
• POWDER COAT CONTROL ARMS AND BRACKETS	\$150.00
• POWDER COAT PEDAL ASSEMBLIES	\$100.00
• CHROME PLATE ROLL BAR AND REAR STAY	\$125.00

### CHASSIS / SUSPENSION POWDER COAT & PLATING : ..... \$945.00

• WINDSHIELD WITH CHROME ON BRASS FRAME	\$650.00
• WINDSHIELD WIPER ARMS AND BLADES	\$75.00
• HOOD SCOOP	\$40.00
• HOOD AND DECK LID WEATHER-STRIP	\$30.00
• DOOR, HOOD AND DECK LID LATCHES	\$225.00
• QUICK JACKS (BLACK POWDER COAT FINISH, SET OF 4 WITH HARDWARE)	\$260.00
• BRAKE COOLING DUCTS (SET OF 2)	\$100.00
• BRAKE AND CLUTCH RESERVOIRS WITH PLUMBING TO MASTER CYLINDERS	\$130.00
• HEAVY DUTY 5 CORE RADIATOR WITH MOUNTING BRACKET	\$410.00
• FOAM FILLED 18 GAL FUEL CELL WITH FILLER NECK, HOSE AND FUEL PICK UPS	\$400.00
• ALUMINUM 3 1/2" LeMANS FILLER CAP WITH REDUCER NECK	\$125.00
• 427 HEADERS AND SIDE PIPES	\$795.00
• FOOTBOX VENT TUBE AND FLANGES (SET OF 2)	\$150.00
• ALUMINUM ENGINE COMPARTMENT SIDE LOUVERS	\$135.00

### BODY COMPONENTS: ..... \$3,625.00

• CHASSIS WIRING HARNESS WITH FUSE BOX	\$450.00
• TWO SPEED WINDSHIELD WIPER MOTOR ASSEMBLY WITH CABLE AND WHEELBOXES	\$275.00
• ELECTRIC FUEL PUMPS (2)	\$200.00
• DUAL ELECTRIC PUSHER RADIATOR FAN	\$150.00
• HORN WITH RELAY	\$35.00
• HEAD LAMP RELAY	\$18.00
• HEAD LAMPS (2)	\$270.00
• TAIL LAMPS (2)	\$150.00
• IGNITION SWITCH	\$25.00
• FUEL PUMP SWITCHES (2)	\$30.00
• BRAKE LAMP SWITCH	\$18.00
• INSTRUMENT LAMP DIMMER	\$28.00
• ENGINE, HI BEAM AND TURN INDICATOR LAMPS	\$21.00
• PARKING LAMPS (2)	\$80.00
• LICENSE LAMP	\$40.00
• HEAD LAMP SWITCH	\$30.00
• WIPER SWITCH	\$30.00
• HORN BUTTON	\$25.00
• TURN SIGNAL AND HI BEAM SWITCH	\$80.00

### ELECTRICAL COMPONENTS: ..... \$1,955.00

• COWL MOUNTED REAR VIEW MIRROR	\$35.00
• ALUMINUM DASH WITH LEATHER COVERING	\$205.00
• INTERIOR UPHOLSTERY (PRECUT CARPETING AND VINYL TRIM)	\$295.00
• METAL FRAME SEATS WITH LEATHER SEATING SURFACES (2)	\$1,200.00
• STEWART WARNER INSTRUMENTATION:	

SPEEDOMETER, TACHOMETER (ELECTRIC), OIL PRESSURE, OIL TEMP, WATER TEMP, FUEL PRESSURE AND AMP METER	\$410.00
<b>INTERIOR TRIM: ..... \$2,145.00</b>	

ALL PRICES F.O.B. TEMPE, AZ

\*ENGINE, TRANSMISSION, OIL COOLER, OIL LINES, DRIVE SHAFT, WHEELS & TIRES ARE OPTIONAL. SEE OPTIONS LIST FOR ADDITIONAL COSTS.  
COMPONENTS AND PRICING SUBJECT TO CHANGE WITHOUT NOTICE - ROLLER ASSEMBLY INCLUDES PACKAGE DISCOUNT  
\*HI-TECH COMPONENTS ARE QUALITY REPRODUCTIONS MANUFACTURED TO ORIGINAL SPECIFICATIONS\*

**427 S/C COBRA REPRODUCTION FIBERGLASS BODY AND FIBERGLASS INTERIOR ROLLER ASSEMBLY\*; INCLUDES ALL OF THE ABOVE PLUS THE COMPLETE ASSEMBLY OF THE HI-TECH BODY, CHASSIS AND SUSPENSION COMPONENTS FOR ONLY: \$27,900.00**

2204 WEST SOUTHERN AVE. • TEMPE, AZ. 85282-4303 • (602) 431-9400

## • OPTIONAL COMPONENTS •

• ALUMINUM DOORS, HOOD AND DECK LID (FIBERGLASS BODIED 427 S/C AND 289 FIA ONLY)			
• ALUMINUM DRESS UP PANEL KIT (FIBERGLASS BODIED 427 S/C ONLY)			
• ALUMINUM OIL COOLER			
• OIL COOLER LINES			
• OIL COOLER ALUMINUM DUCTWORK			
• TOP WITH BOWS			
• SIDE CURTAINS (PAIR)			
• SUN VISORS (PAIR)			
• WIND WINGS WITH MOUNTING HARDWARE			
• LEATHER INTERIOR TRIM			
• SMITHS GAUGE PACKAGE			
• HEATER / DEFROSTER UNIT			
• STAINLESS STEEL OVERRIDER (EACH)			
• FRONT AND REAR CHROME HOOP BUMPERS (EACH)			
• CLUTCH SLAVE CYLINDER WITH PLUMBING			
• DRIVE SHAFT			
	\$3,500.00	• HALIBRAND MAGNESIUM KNOCK OFF WHEELS (SET OF 4)	\$2,760.00
	\$1,200.00	• TRIGO ALUMINUM KNOCK OFF WHEELS (SET OF 4)	\$1,900.00
	\$175.00	• FORGED ALUMINUM KNOCK OFFS (SET OF 4)	\$260.00
	\$150.00	• STAINLESS STEEL KNOCK OFFS (SET OF 4)	\$350.00
	\$195.00	• JET HOT COATING (ENGINE TUBES, HEADERS AND SIDE PIPES)	\$460.00
	\$695.00	• ENGINE (CALL FOR PRICING AND AVAILABILITY)	
	\$495.00	• TRANSMISSION (CALL FOR PRICING AND AVAILABILITY)	
	\$95.00	• TIRES (CALL FOR PRICING AND AVAILABILITY)	
	\$100.00	• PAINT AND BODY WORK (CALL FOR PRICING)	
	\$100.00		
	\$1,190.00		
	\$350.00		
	\$75.00		
	\$285.00		
	\$150.00		
	\$155.00		



# HI-TECH MOTORSPORTS

## • BUILDERS PROGRAM SPECIFICATIONS • COMP 427sc

### BODY:

- FIBERGLASS 427 SC BODY, DOORS, HOOD AND DECK LID
- FIBERGLASS FOOTBOXES, REAR WHEELHOUSE QUARTER SECTION AND SUSPENSION COVERS (AS ORIGINAL)
- DOORS, HOOD AND DECK LID HARDWARE

\$4,750.00

### CHASSIS:

- 4" DIA. .125 WALL D.O.M. ROUND TUBE CHASSIS (GLOSS BLACK FINISH)

\$10,070.00

### SUSPENSION:

- ORIGINAL STYLE 4 WHEEL INDEPENDENT SUSPENSION (COMPLETE; SPINDLES, HUBS, UPRIGHTS, ETC.)
- DRIVE HUBS 6 PIN KNOCK OFF (4)
- FRONT AND REAR COIL OVER SHOCK SUSPENSION (4)
- 9 INCH FORD I.R.S. THIRD MEMBER (3.5 RATIO, ORIGINAL MOUNTING)
- REAR HALF SHAFT ASSEMBLIES

\$3,300.00

### CHASSIS COMPONENTS:

- ORIGINAL BRAKE AND CLUTCH PEDAL ASSEMBLY
- BRAKE LINES WITH BRAKE LAMP SWITCH AND FUEL LINES
- 4 WHEEL DISC BRAKES WITH VENTED ROTORS AND INTEGRATED REAR PARKING BRAKE
- INDEPENDENT CLUTCH, FRONT AND REAR BRAKE MASTER CYLINDERS
- ORIGINAL THROTTLE PEDAL AND LINKAGE
- ORIGINAL STYLE RACK AND PINION STEERING, STEERING COLUMN AND LINKAGE
- REPRODUCTION STEERING WHEEL AND HUB

\$4,600.00

### BODY COMPONENTS:

- CHROME ROLL BAR
- WINDSHIELD WITH FRAME AND WIND WINGS
- TWO SPEED WINDSHIELD WIPER MOTOR ASSEMBLY
- WINDSHIELD WIPER ARMS AND BLADES
- CHASSIS WIRING HARNESS WITH FUSE BOX, FLASHER, HEADLAMP RELAY, VOLTAGE REGULATOR, STARTER SOLENOID AND HORN
- HEADLAMPS, PARKING LAMPS, TAILLAMPS, LICENSE LAMP, ENGINE, HI BEAM AND TURN INDICATOR LAMPS
- ELECTRIC FUEL PUMPS (2)
- QUICK JACKS (4 - BLACK FINISH)
- PARKING BRAKE ASSEMBLY
- BRAKE COOLING DUCTS (4)
- BRAKE AND CLUTCH RESERVOIRS WITH PLUMBING TO MASTER CYLINDERS
- HEAVY DUTY 5 CORE RADIATOR WITH MOUNTING BRACKET
- ELECTRIC RADIATOR FAN WITH SHROUD
- FOAM FILLED 18 GAL FUEL CELL WITH FILLER NECK AND FUEL PICK UPS
- ALUMINUM 3 1/2 LEMANS FILLER CAP
- 427 HEADERS AND SIDE PIPES

\$2,430.00

### ALUMINUM TRIM:

- ALUMINUM ENGINE COMPARTMENT SIDE LOUVERS
- ALUMINUM; DASH, FRONT FENDER INNER PANELS, INTERIOR FLOOR AND TUNNEL, REAR BULKHEAD, AND INNER TRUNK PANELS

\$2,450.00

### INTERIOR TRIM:

- INTERIOR UPHOLSTERY (PRECUT CARPETING AND VINYL TRIM)
- ORIGINAL STYLE SEATS WITH LEATHER SEATING SURFACES
- SWITCHES:

IGNITION, HEADLAMPS, FUEL PUMPS, WIPERS, HORN, INSTRUMENT LAMP DIMMER, TURN SIGNAL AND HI BEAM

- STEWART WARNER INSTRUMENTATION:

SPEEDOMETER, TACHOMETER (ELECTRIC), OIL PRESSURE, OIL TEMP, WATER TEMP, FUEL PRESSURE AND AMP METER.

ALL PRICES F.O.B. SCOTTSDALE, AZ.

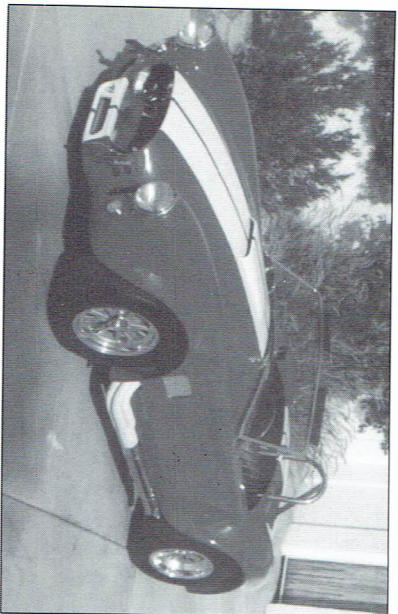
COMPONENTS AND PRICING SUBJECT TO CHANGE WITHOUT NOTICE \*COMPONENTS SPECIFIED AS ORIGINAL ARE REPRODUCTIONS MADE TO ORIGINAL SPECIFICATIONS\*

7901 E. PIERCE ST. SUITE C • SCOTTSDALE, AZ. 85257  
(602) 990-2442

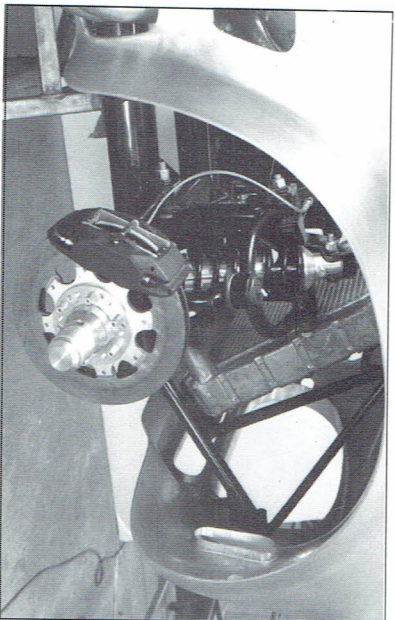


## Hi-Tech MOTORSPORTS

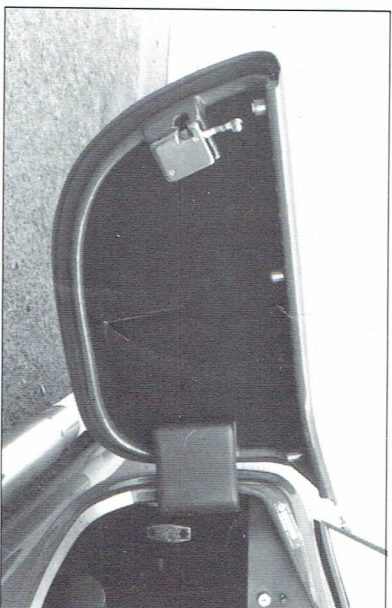
### • 427 S/C COBRA REPRODUCTION •



Hi-Tech Motorsports 427 S/C Fiberglass bodies are true to the original in both size and shape. All Bodies are hand laminated and have an exterior gelcoat finish. Door, deck lid and hood sections are bonded to  $\frac{3}{4}$ " steel tube reinforcement, as on the original, and delivered fitted, hung and latched.



There are some areas we felt needed a little updating while keeping the look and feel of the car authentic. The front suspension is an example of how a reproduction of an original can be made better using late model ball joints, bearings and seals. These upgrades will give you many miles of dependable service.



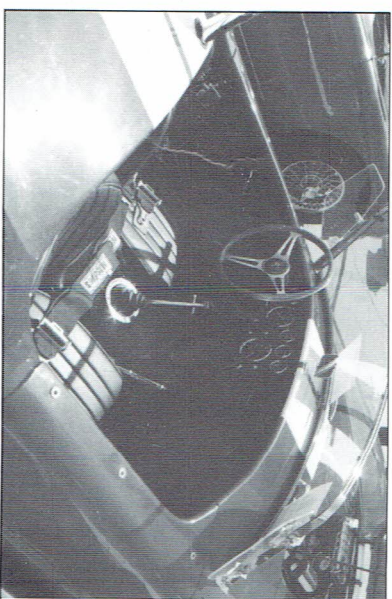
The detail seen here is the  $\frac{3}{4}$ " steel tube frame bonded to the outer fiberglass skin. The hinge assembly is a reproduction of the original design manufactured from heavier material and incorporating a bronze bushing for smooth operation. Even the latch is the same as the one used on the original.



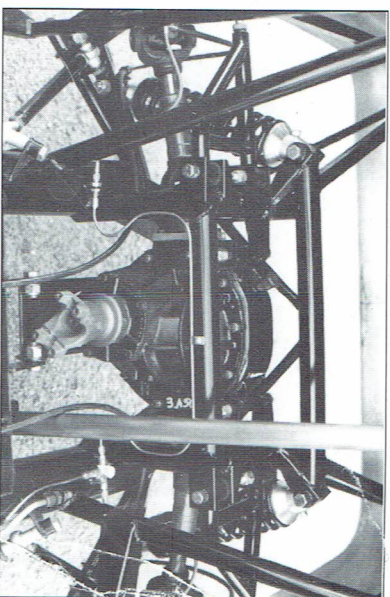
A Cobra that is a true reproduction should include authentic pin drive hubs for knock off style wheels, adjustable coil over shocks, Wilwood 12.18" Dia. vented rotors and Superlite II calipers at all four corners. These items are included as standard components on all Hi-Tech Motorsports 427 S/C Cobras.

HI-TECH VIDEO AVAILABLE CALL (602) 431-9400

## Hi-Tech MOTORSPORTS



The interior is a continuation of that original detail. All the gauges and switches are reproductions of the authentic pieces. The leather seats with steel tube framework, parking brake handle, steering column and brake/clutch pedal assemblies are just a few of the items that are sold for restoration of authentic Cobras.



The independent rear suspension is another example of Hi-Tech engineering. It looks like an original but the center case holds a Ford 9" instead of the Salisbury differential. This unit is interchangeable with original differential but gives you strength, reliability and a wider range of gear selection.